

डी०ए०वी० स्कूल, नॉर्थ करणपुरा परियोजना परिसर, टंडवा।

मशहूर नाम - टंडवा

थाना नं० - 58

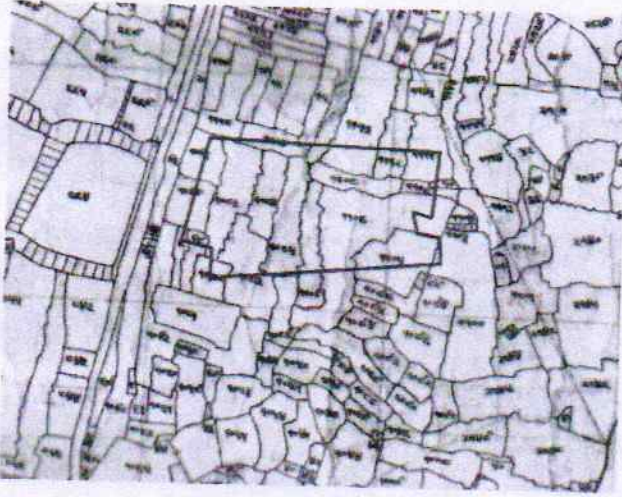
थाना - टंडवा

परगना - करणपुरा

जिला - चतरा

पैमाना बहिस्ताव फी मील 16 इंच

सन 1911-12



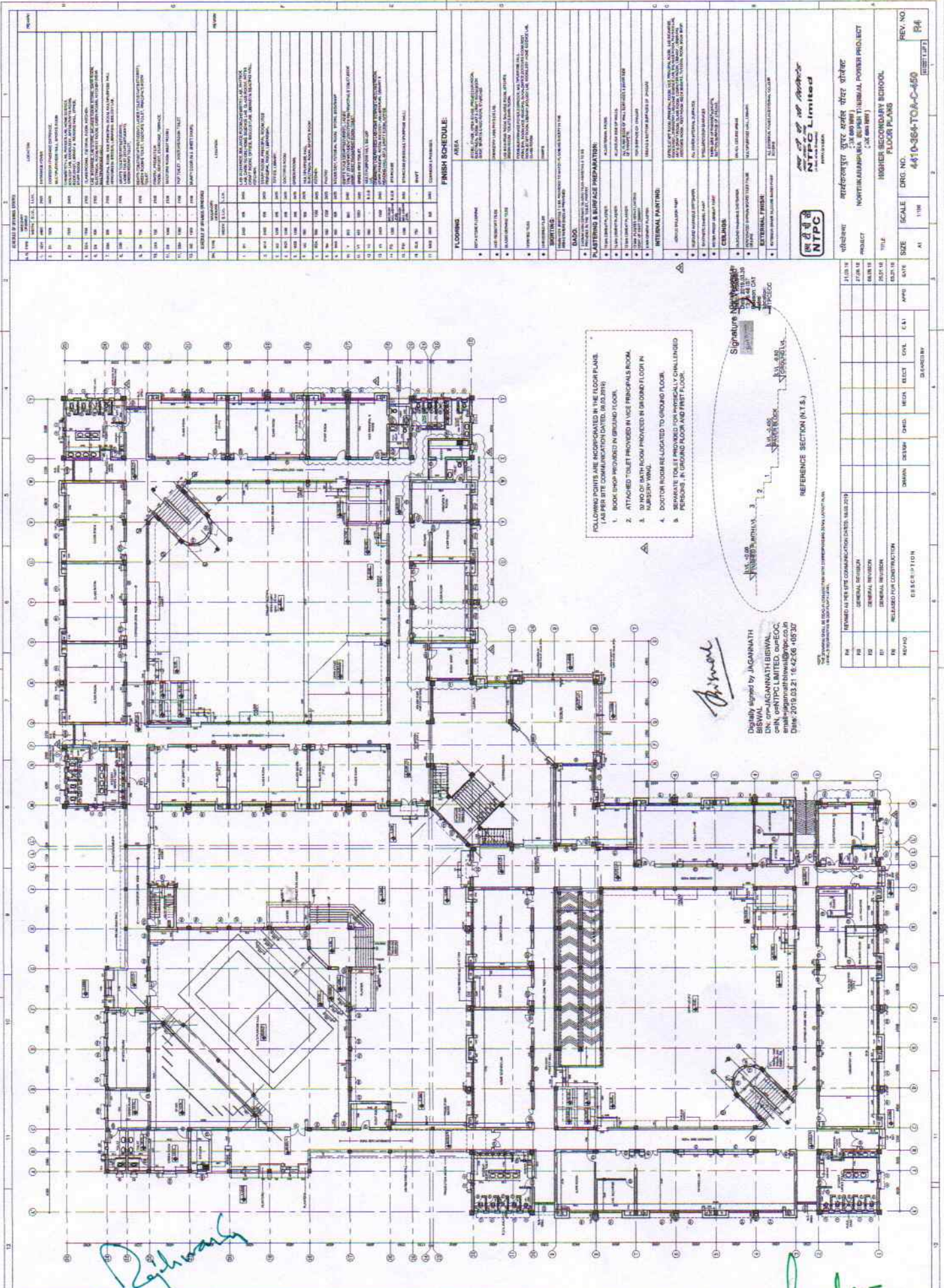
खाता सं०	प्लॉट सं०	रकबा (ए० मी)	भूमि का प्रकार
102	1076 अंश	0.18	रैयती
94	1077 अंश	0.25	रैयती
6	1078 अंश	0.01	रैयती
6	1079 अंश	0.03	रैयती
75	1080 अंश	0.08	रैयती
13	1082 अंश	0.34	रैयती
39	1083 अंश	0.65	रैयती
75	1084	0.43	रैयती
6	1085	0.61	रैयती
102	1100 अंश	0.02	रैयती
99	1105 अंश	0.40	रैयती
92	1106 अंश	1.20	रैयती
128	1107 अंश	0.30	रैयती
73	1108	0.28	रैयती
131	1109 अंश	0.08	रैयती
73	1110 अंश	0.01	रैयती
130	1111 अंश	0.18	रैयती
69	1112 अंश	0.14	रैयती
39	1113 अंश	0.22	रैयती
13	1114 अंश	0.18	रैयती
20	1115 अंश	0.01	रैयती
	कुल	5.60 ए०	

D. K. Singh

Principal
DAV Public School
NTPC North Karanpura

M. K. Singh

Manager
DAV Public School
NTPC North Karanpura



FOLLOWING POINTS ARE INCORPORATED IN THE FLOOR PLAN.
(AS PER SITE COMPLETION DATE: 08/01/2019)

1. BOOK SHIP PROVIDED IN GROUND FLOOR.
2. ATTACHED TOILET PROVIDED IN VICE PRINCIPALS ROOM.
3. TO NO OF BATH ROOM PROVIDED IN GROUND FLOOR IN MASTERY WING.
4. DOCTOR ROOM RELOCATED TO GROUND FLOOR.
5. SEPARATE TOILET PROVIDED FOR PHYSICALLY CHALLENGED PERSONS IN GROUND FLOOR AND FIRST FLOOR.

Signature of *[Handwritten Signature]*
 Date: 2019.03.21 16:02:06 10530
 REFERENCE SECTION (N.T.S.)

Digitally signed by JAGANNATH
 BISWAL
 DN: cn=JAGANNATH BISWAL,
 o=NTPC LIMITED, ou=ECOC,
 email=jagannathbiswal@ntpc.co.in
 Date: 2019.03.21 16:02:06 +05'30'

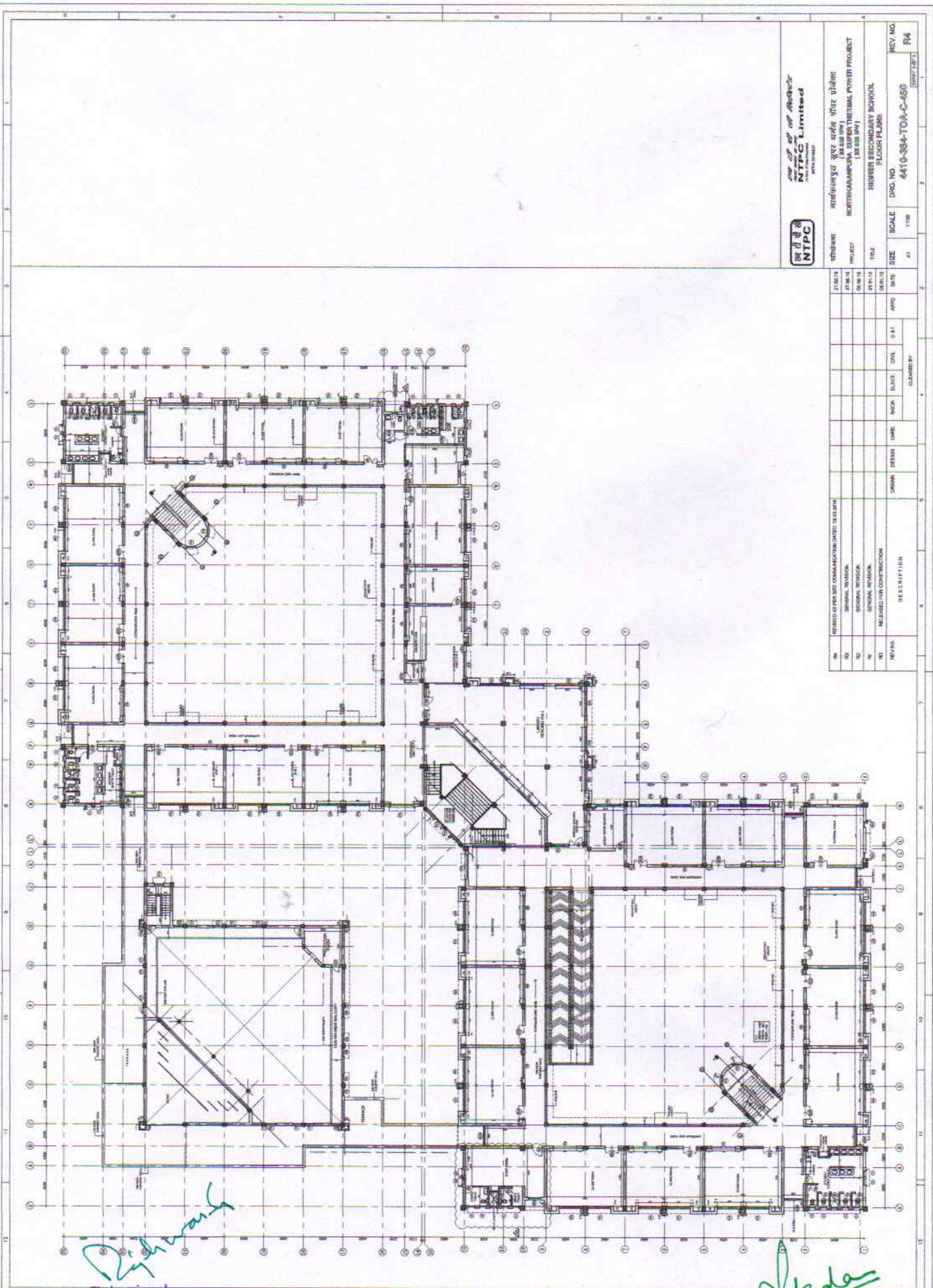
REV. NO.	04
DRG. NO.	4470-364-TO-C-450
SCALE	1/100
SIZE	A1
TITLE	FLOOR PLANS
PROJECT	DAV PUBLIC SCHOOL NORTH KARANPURA, BISHNUPUR THIRUMAL, POWERS PROJECT (7.08.000.000)
CLIENT	DAV EDUCATIONAL TRUST
DESIGNED BY	JAGANNATH BISWAL
CHECKED BY	[Handwritten Signature]
DATE	2019.03.21

NO	DESCRIPTION	DATE
01	GENERAL REVISION	08/01/2019
02	GENERAL REVISION	
03	GENERAL REVISION	
04	REVISION FOR CONSTRUCTION	

NO.	DESCRIPTION	UNIT	QTY	REMARKS
1	CEILING	SQ. FT.	1000	
2	FLOORING	SQ. FT.	1000	
3	WALLS	SQ. FT.	1000	
4	DOORS	NO.	100	
5	WINDOWS	NO.	100	
6	PAINTING	SQ. FT.	1000	
7	MECHANICAL	SQ. FT.	1000	
8	ELECTRICAL	SQ. FT.	1000	
9	PLUMBING	SQ. FT.	1000	
10	MECHANICAL	SQ. FT.	1000	
11	ELECTRICAL	SQ. FT.	1000	
12	PLUMBING	SQ. FT.	1000	
13	MECHANICAL	SQ. FT.	1000	
14	ELECTRICAL	SQ. FT.	1000	
15	PLUMBING	SQ. FT.	1000	
16	MECHANICAL	SQ. FT.	1000	
17	ELECTRICAL	SQ. FT.	1000	
18	PLUMBING	SQ. FT.	1000	
19	MECHANICAL	SQ. FT.	1000	
20	ELECTRICAL	SQ. FT.	1000	
21	PLUMBING	SQ. FT.	1000	
22	MECHANICAL	SQ. FT.	1000	
23	ELECTRICAL	SQ. FT.	1000	
24	PLUMBING	SQ. FT.	1000	
25	MECHANICAL	SQ. FT.	1000	
26	ELECTRICAL	SQ. FT.	1000	
27	PLUMBING	SQ. FT.	1000	
28	MECHANICAL	SQ. FT.	1000	
29	ELECTRICAL	SQ. FT.	1000	
30	PLUMBING	SQ. FT.	1000	
31	MECHANICAL	SQ. FT.	1000	
32	ELECTRICAL	SQ. FT.	1000	
33	PLUMBING	SQ. FT.	1000	
34	MECHANICAL	SQ. FT.	1000	
35	ELECTRICAL	SQ. FT.	1000	
36	PLUMBING	SQ. FT.	1000	
37	MECHANICAL	SQ. FT.	1000	
38	ELECTRICAL	SQ. FT.	1000	
39	PLUMBING	SQ. FT.	1000	
40	MECHANICAL	SQ. FT.	1000	
41	ELECTRICAL	SQ. FT.	1000	
42	PLUMBING	SQ. FT.	1000	
43	MECHANICAL	SQ. FT.	1000	
44	ELECTRICAL	SQ. FT.	1000	
45	PLUMBING	SQ. FT.	1000	
46	MECHANICAL	SQ. FT.	1000	
47	ELECTRICAL	SQ. FT.	1000	
48	PLUMBING	SQ. FT.	1000	
49	MECHANICAL	SQ. FT.	1000	
50	ELECTRICAL	SQ. FT.	1000	

Principal
DAV Public School
 NTPC North Karanpura

Manager
DAV Public School
 NTPC North Karanpura



NTPC Limited
North Eastern Power Corporation Limited

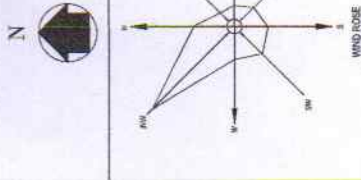
शुभेभर
 PROJECT NORTH KARNAPURA SUPER THERMAL POWER PROJECT
 (1300 MW)
 TITLE HINWER SECONDARY SCHOOL
 FLOOR PLAN
 DWG. NO. 4410-364-TOM-C-450
 SCALE 1/18
 DATE 11/10/11
 REV. NO. 04

REV. NO.	REASON FOR THE CORRECTION/DATE IS ISSUED	DATE	BY	CHKD BY	APPD BY	DATE
01	GENERAL REVISION	02/11/11				
02	GENERAL REVISION	02/11/11				
03	RELEASED FOR CONSTRUCTION	02/11/11				

Dishant
Principal
 DAV Public School
 NTPC North Karanpura

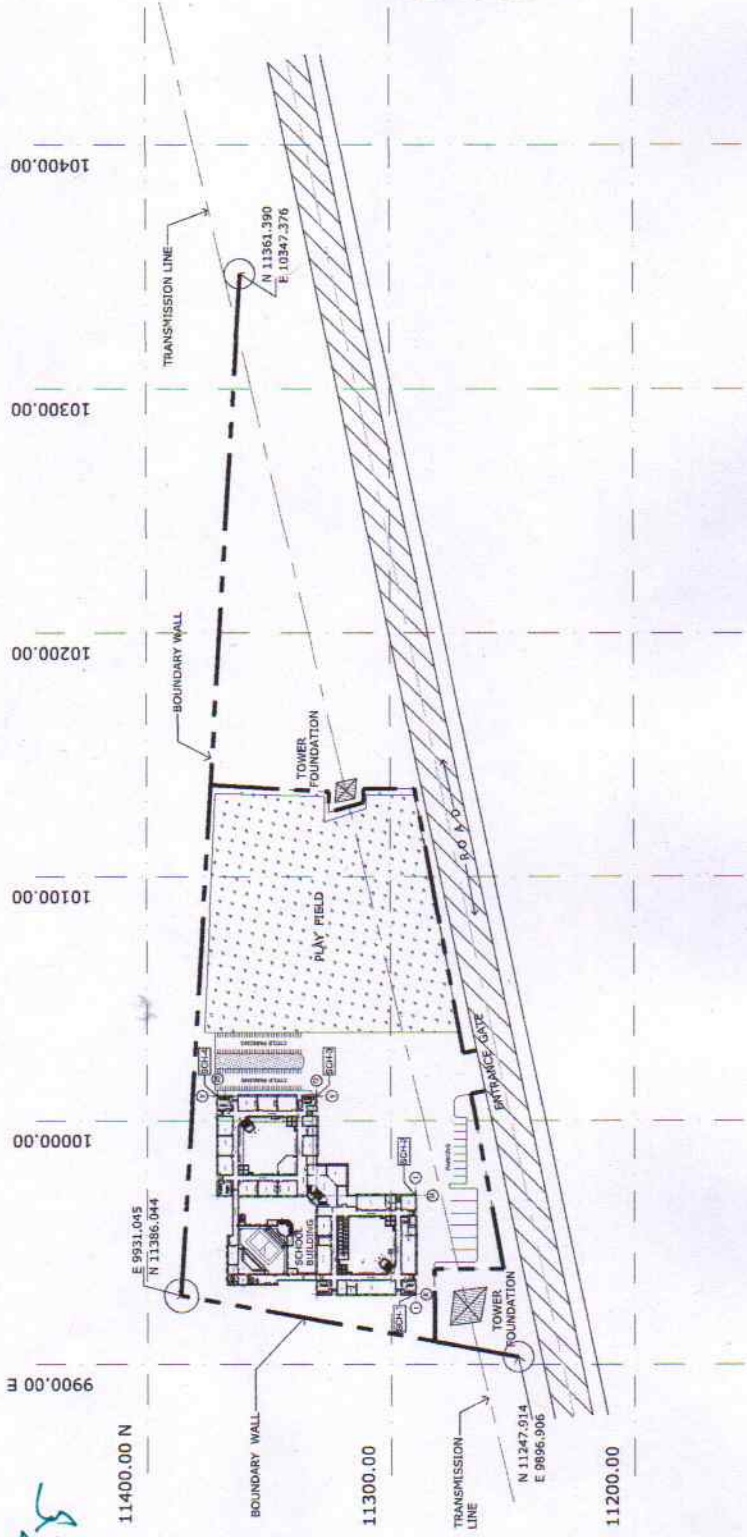
Sharma
Manager
 DAV Public School
 NTPC North Karanpura

This drawing is the property of NTPC Limited. No part of this drawing shall be reproduced or used in any manner without the written permission.



[Handwritten Signature]

Digitally signed by sanjay kumar saxena
 DN: cn=sanjay kumar saxena,
 c=IN, o=NTPC, ou=TF-Infra,
 email=ksaxena04@ntpc.co.in
 Date: 2018.01.29 17:41:19 +05'30'



Signature: *[Handwritten Signature]*
 Date: 29/01/2018
 Time: 17:41:19
 IP: 192.168.1.100

BLOCK REFERENCE POINTS & COORDINATES			
S.N.	BUILDINGS	BLOCK REF. POINTS	N-COORDINATE
1.	SCHOOL	SCM-1	11280.04
		SCM-2	11290.04
		SCM-3	11300.04
		SCM-4	11371.07
			10010.02
			10010.02

BLOCK REFERENCE POINTS & COORDINATES									
S.N.	BUILDINGS	BLOCK REF. POINTS	N-COORDINATE	E-COORDINATE	FINISHED PLURTH U/L				
1.	SCHOOL	SCM-1	11280.04	9928.09	454.00				
		SCM-2	11290.04	9996.02					
		SCM-3	11300.04	10010.02					
		SCM-4	11371.07	10010.02					

NTPC
 NORTH CARORINA SUPER THERMAL POWER PROJECT
 (3 X 600 MW)
 (32 000 MW)
 ZONAL LAYOUT PLAN - B
 H.S. SCHOOL AREA

DRG NO. 6410-364-TOA-C-008
 SCALE 1:100
 SIZE A-1
 REV. NO. 03

4410-364-TOA-C-008 - R0

[Handwritten Signature]

Principal
 DAV Public School
 NTPC North Karanpura

[Handwritten Signature]

Manager
 DAV Public School
 NTPC North Karanpura

This document is the property of NTPC Limited. No part of this document shall be reproduced by any means without the written permission.

Digitally signed by
**JAGANNATH
 BISWAL**
 DN:
 cn=**JAGANNATH
 BISWAL**, o=**NTPC LIMITED**,
 ou=**ECC**,
 email=**jagannathb@ntpc.co.in**
 Date: 2018.07.11
 16:10:59 +05'30'

Primal

Signature Notary
 NTPC
 100, 101, 102, 103, 104
 105, 106, 107, 108
 109, 110, 111, 112
 113, 114, 115, 116
 117, 118, 119, 120
 121, 122, 123, 124
 125, 126, 127, 128
 129, 130, 131, 132
 133, 134, 135, 136
 137, 138, 139, 140
 141, 142, 143, 144
 145, 146, 147, 148
 149, 150, 151, 152
 153, 154, 155, 156
 157, 158, 159, 160
 161, 162, 163, 164
 165, 166, 167, 168
 169, 170, 171, 172
 173, 174, 175, 176
 177, 178, 179, 180
 181, 182, 183, 184
 185, 186, 187, 188
 189, 190, 191, 192
 193, 194, 195, 196
 197, 198, 199, 200
 201, 202, 203, 204
 205, 206, 207, 208
 209, 210, 211, 212
 213, 214, 215, 216
 217, 218, 219, 220
 221, 222, 223, 224
 225, 226, 227, 228
 229, 230, 231, 232
 233, 234, 235, 236
 237, 238, 239, 240
 241, 242, 243, 244
 245, 246, 247, 248
 249, 250, 251, 252
 253, 254, 255, 256
 257, 258, 259, 260
 261, 262, 263, 264
 265, 266, 267, 268
 269, 270, 271, 272
 273, 274, 275, 276
 277, 278, 279, 280
 281, 282, 283, 284
 285, 286, 287, 288
 289, 290, 291, 292
 293, 294, 295, 296
 297, 298, 299, 300
 301, 302, 303, 304
 305, 306, 307, 308
 309, 310, 311, 312
 313, 314, 315, 316
 317, 318, 319, 320
 321, 322, 323, 324
 325, 326, 327, 328
 329, 330, 331, 332
 333, 334, 335, 336
 337, 338, 339, 340
 341, 342, 343, 344
 345, 346, 347, 348
 349, 350, 351, 352
 353, 354, 355, 356
 357, 358, 359, 360
 361, 362, 363, 364
 365, 366, 367, 368
 369, 370, 371, 372
 373, 374, 375, 376
 377, 378, 379, 380
 381, 382, 383, 384
 385, 386, 387, 388
 389, 390, 391, 392
 393, 394, 395, 396
 397, 398, 399, 400
 401, 402, 403, 404
 405, 406, 407, 408
 409, 410, 411, 412
 413, 414, 415, 416
 417, 418, 419, 420
 421, 422, 423, 424
 425, 426, 427, 428
 429, 430, 431, 432
 433, 434, 435, 436
 437, 438, 439, 440
 441, 442, 443, 444
 445, 446, 447, 448
 449, 450, 451, 452
 453, 454, 455, 456
 457, 458, 459, 460
 461, 462, 463, 464
 465, 466, 467, 468
 469, 470, 471, 472
 473, 474, 475, 476
 477, 478, 479, 480
 481, 482, 483, 484
 485, 486, 487, 488
 489, 490, 491, 492
 493, 494, 495, 496
 497, 498, 499, 500
 501, 502, 503, 504
 505, 506, 507, 508
 509, 510, 511, 512
 513, 514, 515, 516
 517, 518, 519, 520
 521, 522, 523, 524
 525, 526, 527, 528
 529, 530, 531, 532
 533, 534, 535, 536
 537, 538, 539, 540
 541, 542, 543, 544
 545, 546, 547, 548
 549, 550, 551, 552
 553, 554, 555, 556
 557, 558, 559, 560
 561, 562, 563, 564
 565, 566, 567, 568
 569, 570, 571, 572
 573, 574, 575, 576
 577, 578, 579, 580
 581, 582, 583, 584
 585, 586, 587, 588
 589, 590, 591, 592
 593, 594, 595, 596
 597, 598, 599, 600
 601, 602, 603, 604
 605, 606, 607, 608
 609, 610, 611, 612
 613, 614, 615, 616
 617, 618, 619, 620
 621, 622, 623, 624
 625, 626, 627, 628
 629, 630, 631, 632
 633, 634, 635, 636
 637, 638, 639, 640
 641, 642, 643, 644
 645, 646, 647, 648
 649, 650, 651, 652
 653, 654, 655, 656
 657, 658, 659, 660
 661, 662, 663, 664
 665, 666, 667, 668
 669, 670, 671, 672
 673, 674, 675, 676
 677, 678, 679, 680
 681, 682, 683, 684
 685, 686, 687, 688
 689, 690, 691, 692
 693, 694, 695, 696
 697, 698, 699, 700
 701, 702, 703, 704
 705, 706, 707, 708
 709, 710, 711, 712
 713, 714, 715, 716
 717, 718, 719, 720
 721, 722, 723, 724
 725, 726, 727, 728
 729, 730, 731, 732
 733, 734, 735, 736
 737, 738, 739, 740
 741, 742, 743, 744
 745, 746, 747, 748
 749, 750, 751, 752
 753, 754, 755, 756
 757, 758, 759, 760
 761, 762, 763, 764
 765, 766, 767, 768
 769, 770, 771, 772
 773, 774, 775, 776
 777, 778, 779, 780
 781, 782, 783, 784
 785, 786, 787, 788
 789, 790, 791, 792
 793, 794, 795, 796
 797, 798, 799, 800
 801, 802, 803, 804
 805, 806, 807, 808
 809, 810, 811, 812
 813, 814, 815, 816
 817, 818, 819, 820
 821, 822, 823, 824
 825, 826, 827, 828
 829, 830, 831, 832
 833, 834, 835, 836
 837, 838, 839, 840
 841, 842, 843, 844
 845, 846, 847, 848
 849, 850, 851, 852
 853, 854, 855, 856
 857, 858, 859, 860
 861, 862, 863, 864
 865, 866, 867, 868
 869, 870, 871, 872
 873, 874, 875, 876
 877, 878, 879, 880
 881, 882, 883, 884
 885, 886, 887, 888
 889, 890, 891, 892
 893, 894, 895, 896
 897, 898, 899, 900
 901, 902, 903, 904
 905, 906, 907, 908
 909, 910, 911, 912
 913, 914, 915, 916
 917, 918, 919, 920
 921, 922, 923, 924
 925, 926, 927, 928
 929, 930, 931, 932
 933, 934, 935, 936
 937, 938, 939, 940
 941, 942, 943, 944
 945, 946, 947, 948
 949, 950, 951, 952
 953, 954, 955, 956
 957, 958, 959, 960
 961, 962, 963, 964
 965, 966, 967, 968
 969, 970, 971, 972
 973, 974, 975, 976
 977, 978, 979, 980
 981, 982, 983, 984
 985, 986, 987, 988
 989, 990, 991, 992
 993, 994, 995, 996
 997, 998, 999, 1000



Digitally signed by
NTPC Limited
 DN:
 cn=**NTPC Limited**

Order No: 4410-266-TO-A-C-451
 Project: NORTH BANANAJUA BARGE TERMINAL POWER PROJECT
 (2x 600 MW)
 Title: NTPC ESTABLISHMENT SCHOOL
 TERRACE PLAN
 Scale: 1/16
 Date: 2018.07.11

NO	REVISION	DESCRIPTION	DATE	BY	CHKD	APPD	SCALE	DATE
01	GENERAL REVIEW							
02	REVISION FOR CONSTRUCTION							

Primal
Principal

**DAV Public School
 NTPC North Karanpura**

Primal
Manager
**DAV Public School
 NTPC North Karanpura**

This document is the property of NTPC Limited. No part of this document shall be reproduced by any means without the written permission.



नवी एच सी लिमिटेड
NTPC Limited
एन.ए.सी. लिमिटेड

विषय: इण्डियन गैस कोरपोरेशन लिमिटेड
(इ.गै.सी.सी.)
प्रोजेक्ट: इण्डियन गैस कोरपोरेशन लिमिटेड
(इ.गै.सी.सी.)

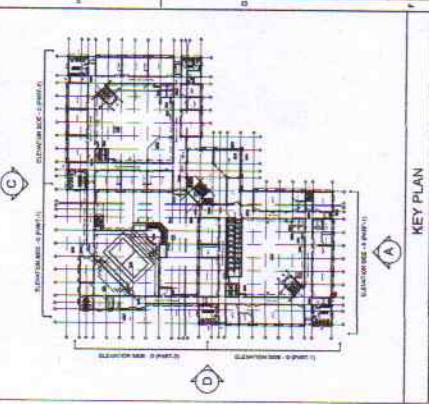
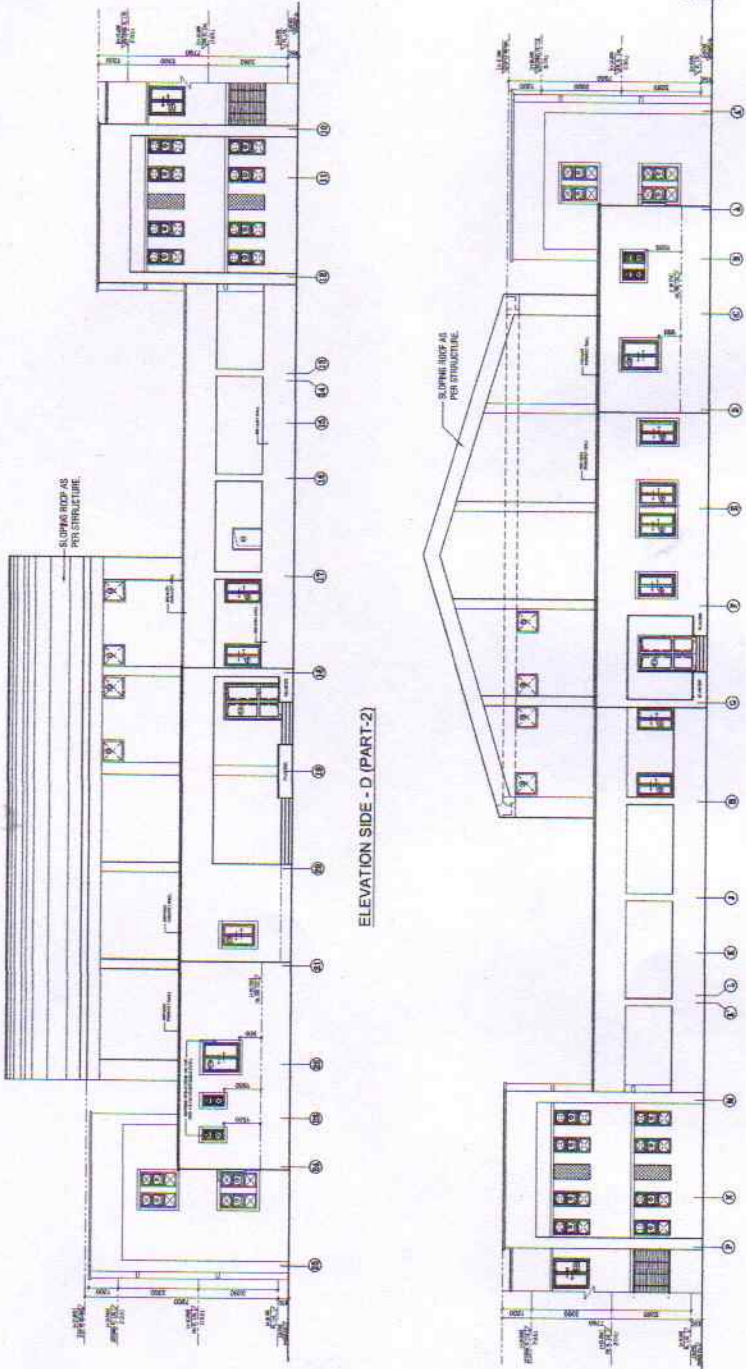
REV. NO.	REV. DATE	REV. DESCRIPTION
01	10/08/2011	ISSUED FOR TENDER
02	10/08/2011	ISSUED FOR TENDER
03	10/08/2011	ISSUED FOR TENDER
04	10/08/2011	ISSUED FOR TENDER
05	10/08/2011	ISSUED FOR TENDER
06	10/08/2011	ISSUED FOR TENDER
07	10/08/2011	ISSUED FOR TENDER
08	10/08/2011	ISSUED FOR TENDER
09	10/08/2011	ISSUED FOR TENDER
10	10/08/2011	ISSUED FOR TENDER
11	10/08/2011	ISSUED FOR TENDER
12	10/08/2011	ISSUED FOR TENDER
13	10/08/2011	ISSUED FOR TENDER
14	10/08/2011	ISSUED FOR TENDER
15	10/08/2011	ISSUED FOR TENDER
16	10/08/2011	ISSUED FOR TENDER
17	10/08/2011	ISSUED FOR TENDER
18	10/08/2011	ISSUED FOR TENDER
19	10/08/2011	ISSUED FOR TENDER
20	10/08/2011	ISSUED FOR TENDER
21	10/08/2011	ISSUED FOR TENDER
22	10/08/2011	ISSUED FOR TENDER
23	10/08/2011	ISSUED FOR TENDER
24	10/08/2011	ISSUED FOR TENDER
25	10/08/2011	ISSUED FOR TENDER
26	10/08/2011	ISSUED FOR TENDER
27	10/08/2011	ISSUED FOR TENDER
28	10/08/2011	ISSUED FOR TENDER
29	10/08/2011	ISSUED FOR TENDER
30	10/08/2011	ISSUED FOR TENDER
31	10/08/2011	ISSUED FOR TENDER
32	10/08/2011	ISSUED FOR TENDER
33	10/08/2011	ISSUED FOR TENDER
34	10/08/2011	ISSUED FOR TENDER
35	10/08/2011	ISSUED FOR TENDER
36	10/08/2011	ISSUED FOR TENDER
37	10/08/2011	ISSUED FOR TENDER
38	10/08/2011	ISSUED FOR TENDER
39	10/08/2011	ISSUED FOR TENDER
40	10/08/2011	ISSUED FOR TENDER
41	10/08/2011	ISSUED FOR TENDER
42	10/08/2011	ISSUED FOR TENDER
43	10/08/2011	ISSUED FOR TENDER
44	10/08/2011	ISSUED FOR TENDER
45	10/08/2011	ISSUED FOR TENDER
46	10/08/2011	ISSUED FOR TENDER
47	10/08/2011	ISSUED FOR TENDER
48	10/08/2011	ISSUED FOR TENDER
49	10/08/2011	ISSUED FOR TENDER
50	10/08/2011	ISSUED FOR TENDER
51	10/08/2011	ISSUED FOR TENDER
52	10/08/2011	ISSUED FOR TENDER
53	10/08/2011	ISSUED FOR TENDER
54	10/08/2011	ISSUED FOR TENDER
55	10/08/2011	ISSUED FOR TENDER
56	10/08/2011	ISSUED FOR TENDER
57	10/08/2011	ISSUED FOR TENDER
58	10/08/2011	ISSUED FOR TENDER
59	10/08/2011	ISSUED FOR TENDER
60	10/08/2011	ISSUED FOR TENDER
61	10/08/2011	ISSUED FOR TENDER
62	10/08/2011	ISSUED FOR TENDER
63	10/08/2011	ISSUED FOR TENDER
64	10/08/2011	ISSUED FOR TENDER
65	10/08/2011	ISSUED FOR TENDER
66	10/08/2011	ISSUED FOR TENDER
67	10/08/2011	ISSUED FOR TENDER
68	10/08/2011	ISSUED FOR TENDER
69	10/08/2011	ISSUED FOR TENDER
70	10/08/2011	ISSUED FOR TENDER
71	10/08/2011	ISSUED FOR TENDER
72	10/08/2011	ISSUED FOR TENDER
73	10/08/2011	ISSUED FOR TENDER
74	10/08/2011	ISSUED FOR TENDER
75	10/08/2011	ISSUED FOR TENDER
76	10/08/2011	ISSUED FOR TENDER
77	10/08/2011	ISSUED FOR TENDER
78	10/08/2011	ISSUED FOR TENDER
79	10/08/2011	ISSUED FOR TENDER
80	10/08/2011	ISSUED FOR TENDER
81	10/08/2011	ISSUED FOR TENDER
82	10/08/2011	ISSUED FOR TENDER
83	10/08/2011	ISSUED FOR TENDER
84	10/08/2011	ISSUED FOR TENDER
85	10/08/2011	ISSUED FOR TENDER
86	10/08/2011	ISSUED FOR TENDER
87	10/08/2011	ISSUED FOR TENDER
88	10/08/2011	ISSUED FOR TENDER
89	10/08/2011	ISSUED FOR TENDER
90	10/08/2011	ISSUED FOR TENDER
91	10/08/2011	ISSUED FOR TENDER
92	10/08/2011	ISSUED FOR TENDER
93	10/08/2011	ISSUED FOR TENDER
94	10/08/2011	ISSUED FOR TENDER
95	10/08/2011	ISSUED FOR TENDER
96	10/08/2011	ISSUED FOR TENDER
97	10/08/2011	ISSUED FOR TENDER
98	10/08/2011	ISSUED FOR TENDER
99	10/08/2011	ISSUED FOR TENDER
100	10/08/2011	ISSUED FOR TENDER

Signature: *[Handwritten Signature]*
Date: 10/08/2011
Name: *[Handwritten Name]*
Design: *[Handwritten Design]*

ELEVATION SIDE - C (PART-1)

ELEVATION SIDE - D (PART-2)

ELEVATION SIDE - D (PART-1)



[Handwritten Signature]
Principal

DAV Public School
NTPC North Karanpura

[Handwritten Signature]
Manager

DAV Public School
NTPC North Karanpura

THIS DRAWING IS THE PROPERTY OF NTPC LIMITED. IT IS TO BE USED ONLY FOR THE PROJECT FOR WHICH IT IS ISSUED. IT IS NOT TO BE REPRODUCED OR TRANSMITTED IN ANY FORM OR BY ANY MEANS, ELECTRONIC OR MECHANICAL, WITHOUT THE WRITTEN PERMISSION OF NTPC LIMITED.



DAV Public School
NTPC Limited
Karapuram

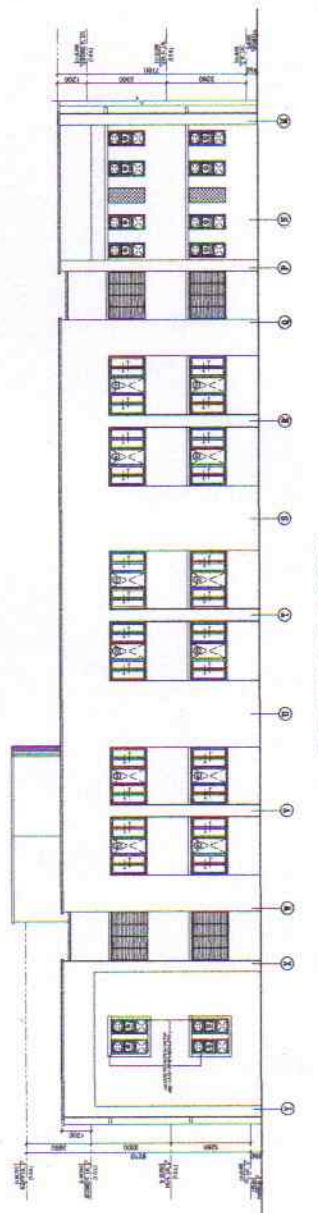
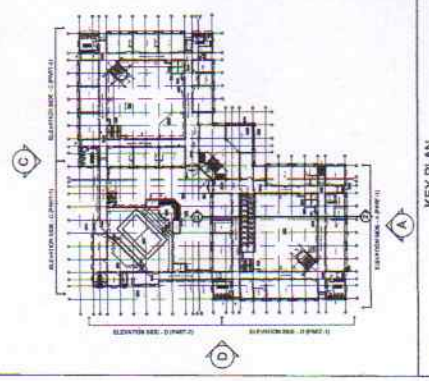
Who/when: 2022-2023
Project: NORTH KARNAPURA, SUPER TUBEWELL POWER PROJECT
(2000000)

REV. NO.	REV. DATE	REV. DESCRIPTION
01	11/10	ISSUED FOR TENDER

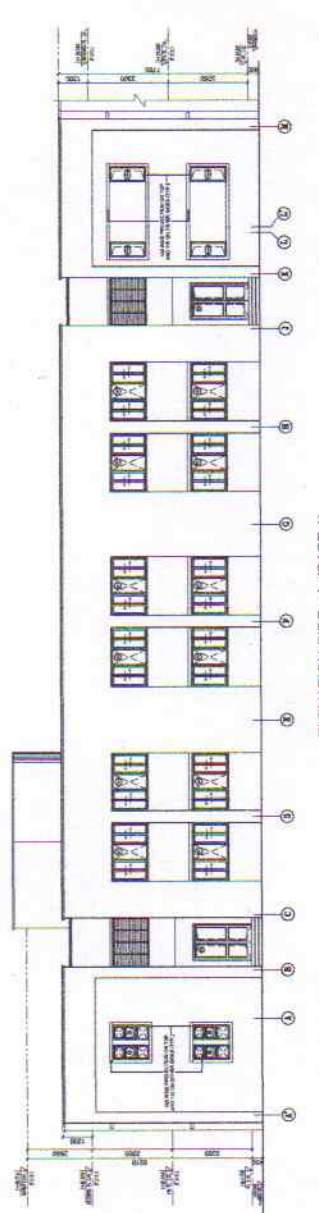
DATE	BY	APPD	CHKD	DATE	BY	APPD	CHKD

NO.	REVISION	DATE	BY	DESCRIPTION
01	GENERAL REVISION			
02	RELEASED FOR CONSTRUCTION			

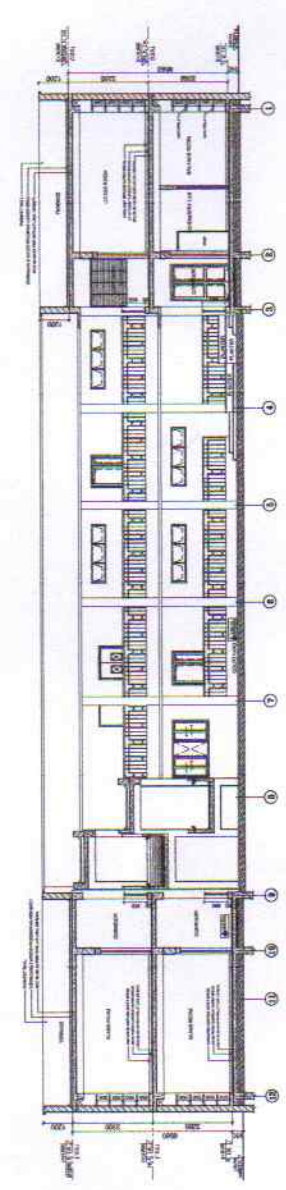
DRWING	DESIGN	CHKD	ELECT. CIVIL	SCALE	DRG. NO.	REV. NO.
				1:100	44110-304-TO-A-C-452	01



ELEVATION SIDE - C (PART-2)



ELEVATION SIDE - A (PART-1)



SECTION 2.2

Dithwanj

Principal

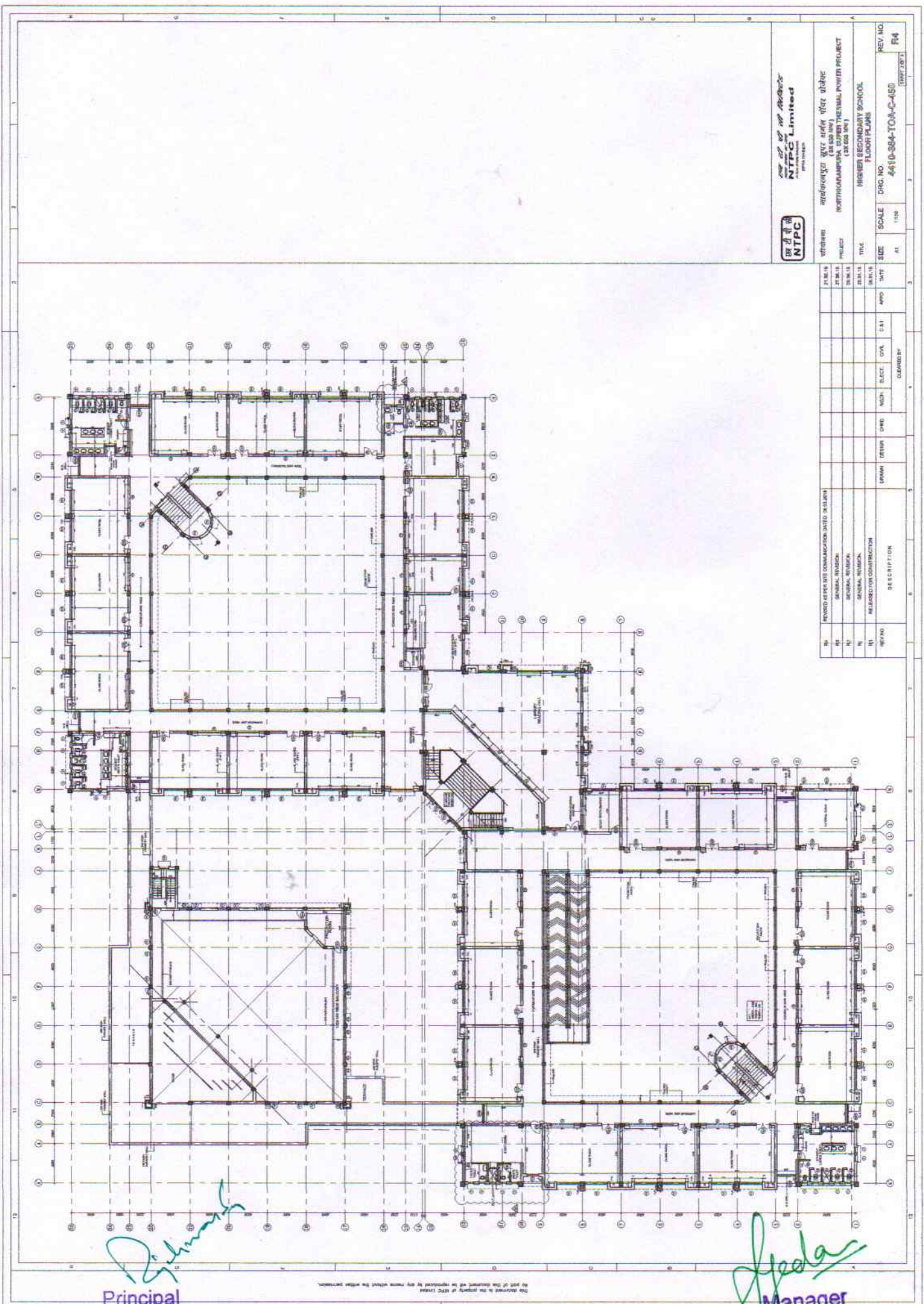
DAV Public School
NTPC North Karanpura

Shedan

Manager

DAV Public School
NTPC North Karanpura

This document is the property of NTPC Limited. No part of this document may be reproduced, stored in a retrieval system, or transmitted in any form or by any means, electronic, mechanical, photocopying, recording, or by any information storage and retrieval system, without the prior written permission of NTPC Limited.



NTPC Limited
POWER DIVISION

STATION: **महाराष्ट्र राज्य विद्युत वित्त बोर्ड**
PROJECT: **महाराष्ट्र राज्य विद्युत वित्त बोर्ड (संगठन) महाराष्ट्र राज्य विद्युत वित्त बोर्ड (संगठन) महाराष्ट्र राज्य विद्युत वित्त बोर्ड (संगठन) महाराष्ट्र राज्य विद्युत वित्त बोर्ड (संगठन)**
TITLE: **महाराष्ट्र राज्य विद्युत वित्त बोर्ड (संगठन) महाराष्ट्र राज्य विद्युत वित्त बोर्ड (संगठन) महाराष्ट्र राज्य विद्युत वित्त बोर्ड (संगठन) महाराष्ट्र राज्य विद्युत वित्त बोर्ड (संगठन)**

REV. NO.	DATE	BY	CHKD. BY	APPD. BY	SCALE	DRG. NO.
R4					1:150	4410-384-T04-C-450

[Signature]

Principal
DAV Public School
NTPC North Karanpura

[Signature]

Manager
DAV Public School
NTPC North Karanpura

This drawing is the property of NTPC Limited. No part of this document will be reproduced by any means without the written permission.